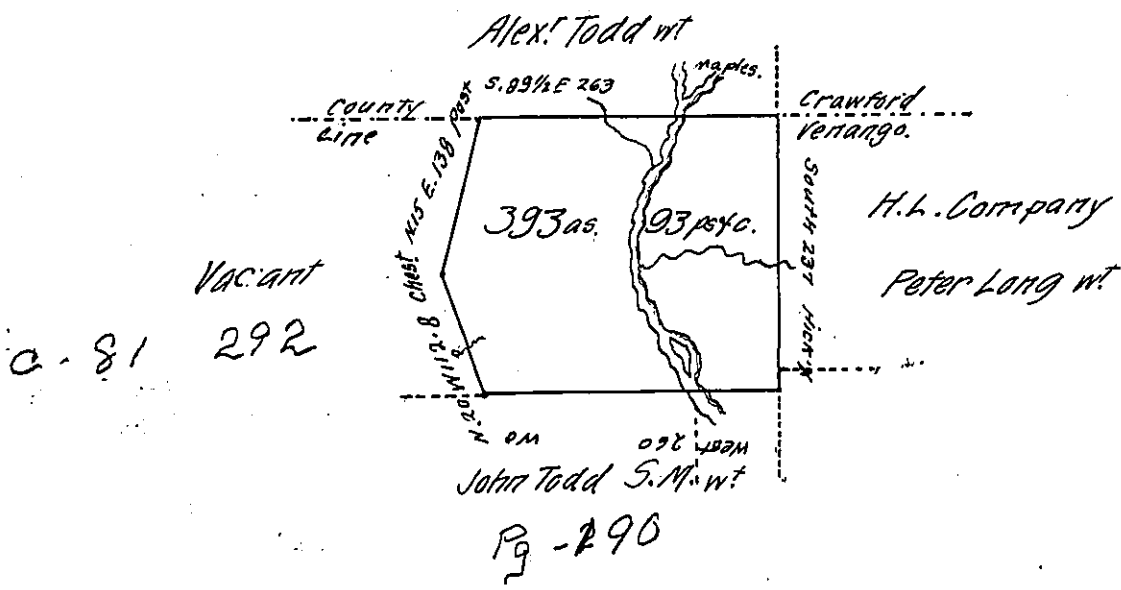


L-25-1



Draft of a tract of land situate partly in Cherry-tree, and partly in Allegheny townships, Verrango county, west of the Allegheny river, on Oil Creek, immediately below the first fork thereof. Surveyed 11th May 1830, in pursuance of a warrant granted to Henry Toland, dated 14th April 1792.

Jacob Spangler Esq.  
 Surveyor General of Pa }

Richd Irwin D.S.

IN TESTIMONY that the above is a copy of the original remaining on file in the Department of Internal Affairs of Pennsylvania, made conformably to an Act of Assembly approved the 16th day of February, 1833, I have hereunto set my Hand and caused the Seal of said Department to be affixed at Harrisburg, this twenty-fourth day of February 1907

*Isaac R. Brown*  
 Secretary of Internal Affairs.